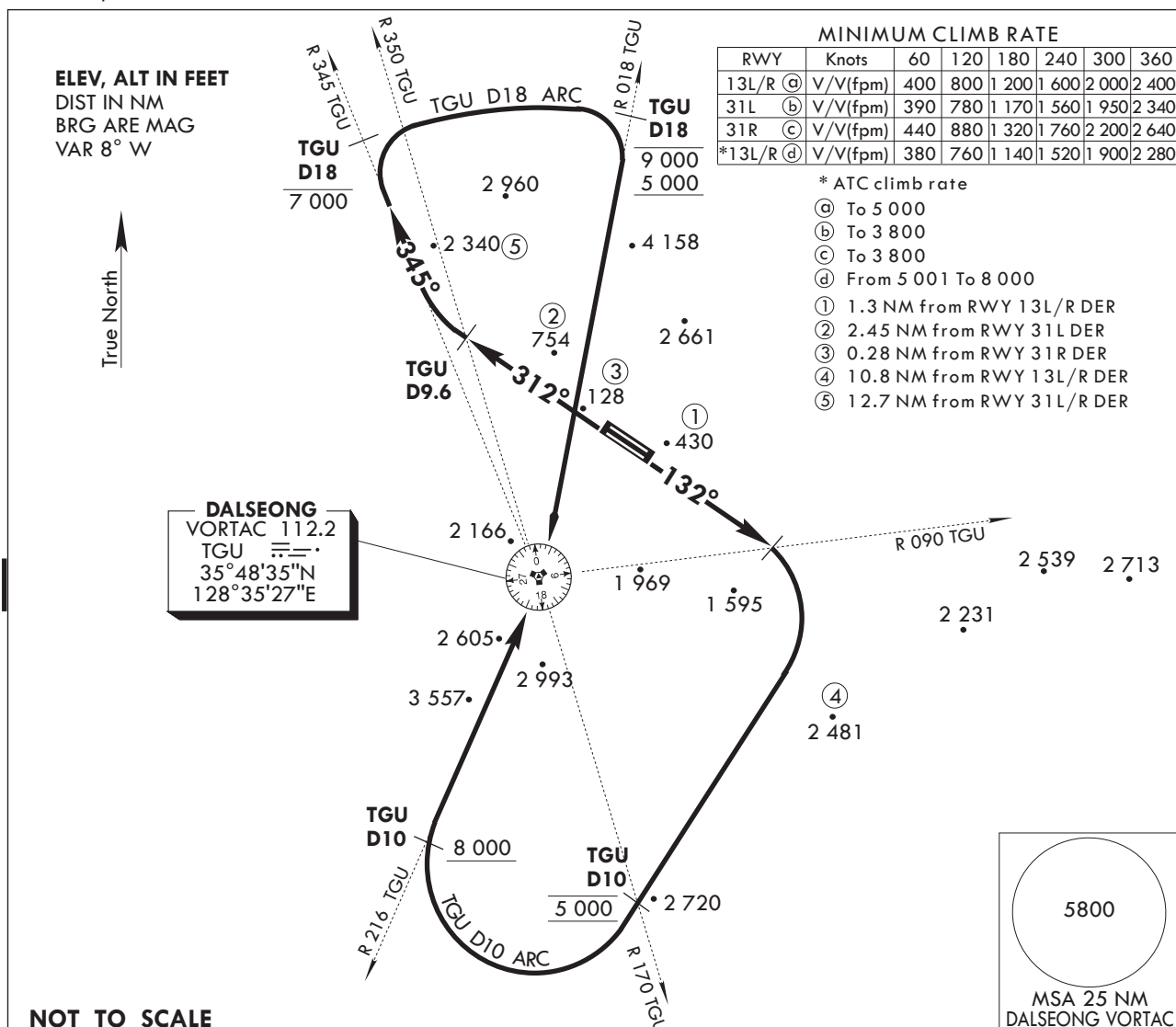


STANDARD DEPARTURE
CHART - INSTRUMENT(SID)

DAEGU DEP	135.9
	230.3
DAEGU TWR	126.2
	236.6

DAEGU/Daegu Intl(RKTN)
RWY 13R/L, RWY 31L/R
DALSEONG 3A

Note : Departure under U.S. TERPS.



DEPARTURE ROUTE DESCRIPTION

RWY 13R/L : Climb on HDG 132° until cross R 090 TGU, then climbing right turn direct R 170 TGU 10 DME maintain 5 000. Then climbing right turn and proceed along 10 DME ARC to intercept R 216 TGU. Then track inbound on R 216 TGU at or above 8 000, and climb to assigned altitude or as directed by DEP control.

RWY 31L/R : Climb on HDG 312° until cross R 350 TGU, then climbing right turn track outbound on R 345 TGU to 18 DME at or below 7 000. Then turn right and proceed along 18 DME ARC to intercept R 018 TGU 18 DME between 5 000 to 9 000. Then climbing right turn inbound on R 018 TGU and climb to assigned altitude or as directed by DEP control.

Change : Amended coordinate format.

INTENTIONALLY

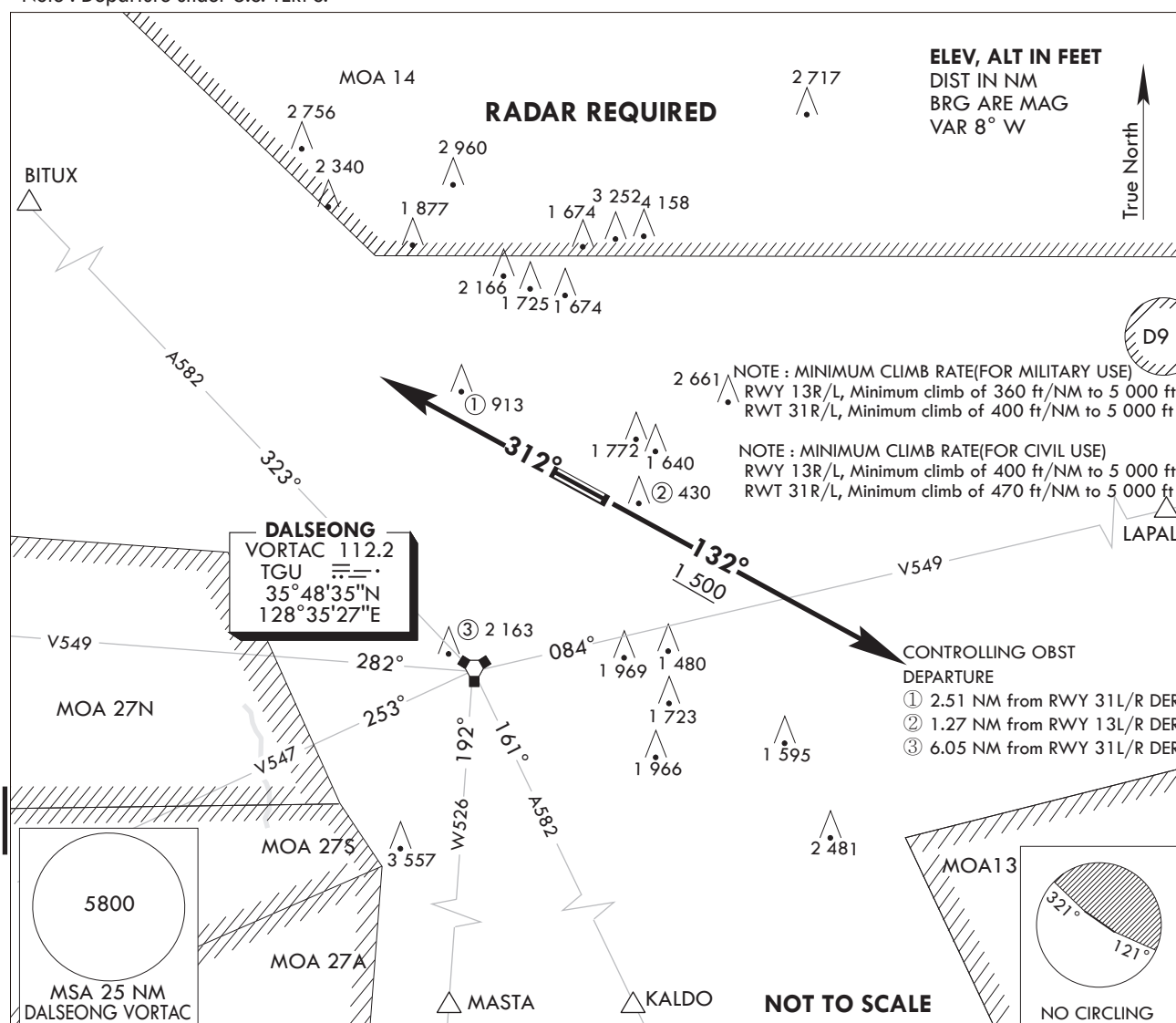
LEFT

BLANK

DAEGU/Daegu Intl(RKTN)
RWY 13R/L, RWY 31L/R
DAEGU 1D

Note : Departure under U.S. TERPS.

DAEGU	DEP	135.9
		230.3
DAEGU	TWR	126.2
		236.6



RWY 13L/R : Climb on HDG 132° to 1 500 ft, Thence.....
RWY 31L/R : Climb on HDG 312°, Thence.....

.....Expect radar vectors to intercept filed enroute fix or navaid.
 Maintain 8 000 ft or assigned altitude/flight level.
 Expect filed altitude/flight level 10 minutes after departure.

LOST COMMUNICATIONS : If radio contact is not established with departure control prior to reaching 5 000 ft, Continue climb to 8 000 ft before turning to filed fix/navaid and proceed filed route and altitude.

Change : Information of ATS route(W66 → W526).

INTENTIONALLY

LEFT

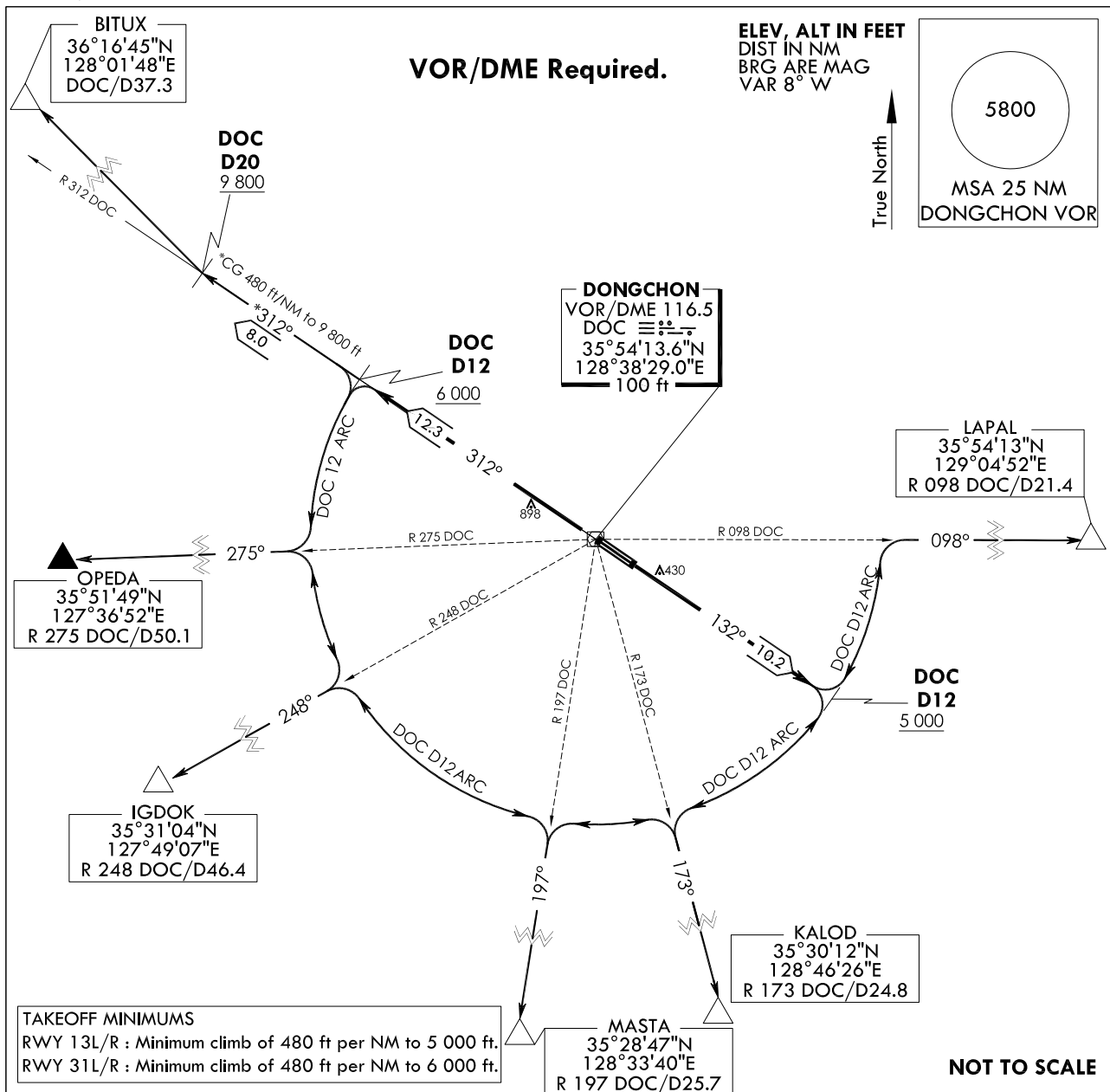
BLANK

STANDARD DEPARTURE
CHART INSTRUMENT(SID)

DAEGU DEP	135.9
	230.3
DAEGU TWR	126.2
	236.6

DAEGU/Daegu Intl(RKTN)
RWY 13R/L, RWY 31R/L
DONGCHON 7

Note : Departure under U.S. TERPS.



DEPARTURE ROUTE DESCRIPTION

DONGCHON 7 DEPARTURE

RUNWAY 13R/L : Climb HDG 132° to intercept R 132 DOC and R 132 DOC to cross 12DME at or above 5 000 ft, thence.....

RUNWAY 31R/L : Climb HDG 312° to intercept R 312 DOC, and R 312 DOC to cross 12DME at or above 6 000 ft, thence.....

.....via transition routes and climb assigned altitude by ATC.

The following transitions are ATC assigned only : Fly ARC DOC VOR/DME 12DME to intercept.....

BITUX Transition : R 312 DOC to cross 20DME at or above 9 800 ft, then direct to BITUX.

OPEDA Transition : R 275 DOC, then track outbound R 275 DOC to OPEDA.

IGDOK Transition : R 248 DOC, then track outbound R 248 DOC to IGDOK.

MASTA Transition : R 197 DOC, then track outbound R 197 DOC to MASTA.

KALOD Transition : R 173 DOC, then track outbound R 173 DOC to KALOD.

LAPAL Transition : R 098 DOC, then track outbound R 098 DOC to LAPAL.

Change : Amended Radial format.

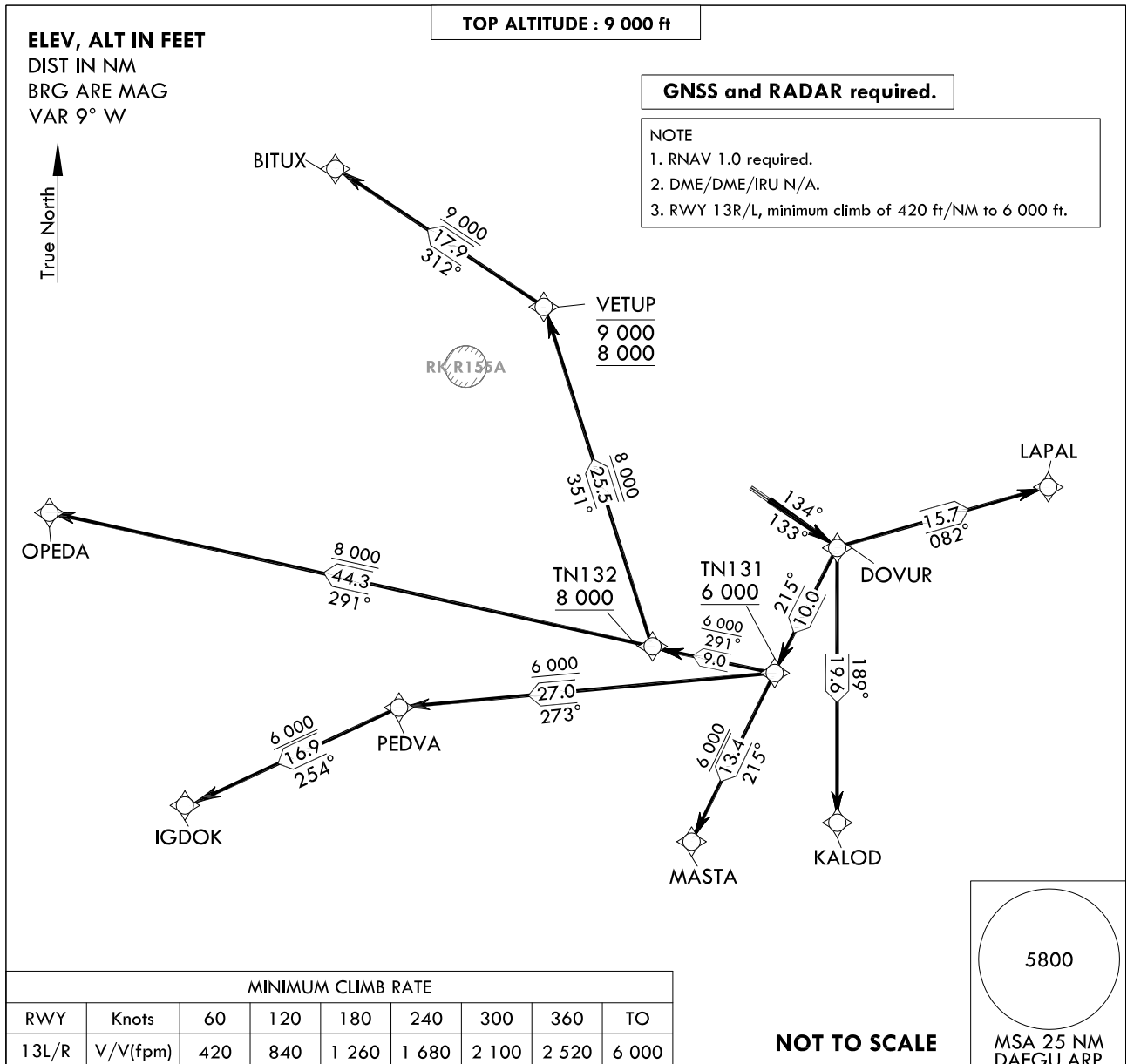
INTENTIONALLY

LEFT

BLANK

STANDARD DEPARTURE CHART
INSTRUMENT (SID)TRANSITION ALT 14 000
TRANSITION LVL FL 140DAEGU DEP 120.25 135.9
230.3
DAEGU TWR 126.2
236.6DAEGU/Daegu Intl(RKTN)
RWY 13R/L
RNAV DOVUR 1

Note : Departure under U.S. TERPS.



DEPARTURE ROUTE DESCRIPTION

TAKE-OFF RWY 13L : Climb course 134° to DOVUR, thence.....TAKE-OFF RWY 13R : Climb course 133° to DOVUR, thence.....

..... Climb to 9 000 ft or assigned altitude via the following transition routes.

BITUX Transition : From DOVUR on track 215° to cross TN131 at or above 6 000 ft, then on track 291° to cross TN132 at or above 8 000 ft, then on track 351° to cross VETUP between at or above 8 000 ft and at or below 9 000 ft, then on track 312° to BITUX.OPEDA Transition : From DOVUR on track 215° to cross TN131 at or above 6 000 ft, then on track 291° to cross TN132 at or above 8 000 ft, then on track 291° to OPEDA.IGDOK Transition : From DOVUR on track 215° to cross TN131 at or above 6 000 ft, then on track 273° to PEDVA and on track 254° to IGDOK.MASTA Transition : From DOVUR on track 215° to cross TN131 at or above 6 000 ft, then on track 215° to MASTA.KALOD Transition : From DOVUR on track 189° to KALOD.LAPAL Transition : From DOVUR on track 082° to LAPAL.

Change : Information of procedure and fix names(MAVIC → DOVUR, DALGU → VETUP, DURYU → PEDVA).

DAEGU/Daegu Intl(RKTN)
RWY 13R/L

RNAV DOVUR 1

AERONAUTICAL DATA TABULATION

Standard Instrument Departure Procedure Coding Tables

RNAV DOVUR 1 - BITUX Transition

Serial Number	Path Descriptor	Waypoint Identifier	Fly-over	Course/Track °M(°T)	Distance (NM)	Turn Direction	Altitude (ft)	Speed (kt)	Coordinates	VPA/ RDH	Navigation Specification	Remarks
001	CF	DOVUR	-	131-134 (124.9) 13R-133 (124.2)	6.0 6.0	-	-	-	35°49'48.9"N 128°46'21.9"E	-	RNAV 1	-
002	TF	TN131	-	215 (206.3)	10.0	-	+6 000	-	35°40'50.1"N 128°40'55.5"E	-	RNAV 1	-
003	TF	TN132	-	291 (282.2)	9.0	-	+8 000	-	35°42'43.8"N 128°30'07.4"E	-	RNAV 1	-
004	TF	VETUP	-	351 (342.0)	25.5	-	-9 000 +8 000	-	36°07'02.7"N 128°20'21.4"E	-	RNAV 1	-
005	TF	BITUX	-	311.7 (302.2)	17.9	-	+9 000	-	36°16'44.9"N 128°01'47.9"E	-	RNAV 1	-

RNAV DOVUR 1 - OPEDA Transition

Serial Number	Path Descriptor	Waypoint Identifier	Fly-over	Course/Track °M(°T)	Distance (NM)	Turn Direction	Altitude (ft)	Speed (kt)	Coordinates	VPA/ RDH	Navigation Specification	Remarks
001	CF	DOVUR	-	131-134 (124.9) 13R-133 (124.2)	6.0 6.0	-	-	-	35°49'48.9"N 128°46'21.9"E	-	RNAV 1	-
002	TF	TN131	-	215 (206.3)	10.0	-	+6 000	-	35°40'50.1"N 128°40'55.5"E	-	RNAV 1	-
003	TF	TN132	-	291 (282.2)	9.0	-	+8 000	-	35°42'43.8"N 128°30'07.4"E	-	RNAV 1	-
004	TF	OPEDA	-	291 (282.1)	44.3	-	+8 000	-	35°51'48.5"N 127°36'52.0"E	-	RNAV 1	-

RNAV DOVUR 1 - IGDOK Transition

Serial Number	Path Descriptor	Waypoint Identifier	Fly-over	Course/Track °M(°T)	Distance (NM)	Turn Direction	Altitude (ft)	Speed (kt)	Coordinates	VPA/ RDH	Navigation Specification	Remarks
001	CF	DOVUR	-	131-134 (124.9) 13R-133 (124.2)	6.0 6.0	-	-	-	35°49'48.9"N 128°46'21.9"E	-	RNAV 1	-
002	TF	TN131	-	215 (206.3)	10.0	-	+6 000	-	35°40'50.1"N 128°40'55.5"E	-	RNAV 1	-
003	TF	PEDVA	-	273 (264.6)	27.0	-	+6 000	-	35°38'13.0"N 128°07'54.2"E	-	RNAV 1	-
004	TF	IGDOK	-	254 (245.1)	16.9	-	+6 000	-	35°31'03.6"N 127°49'06.6"E	-	RNAV 1	-

Change : Information of procedure and fix names(MAVIC → DOVUR, DALGU → VETUP, DURYU → PEDVA).

DAEGU/Daegu Intl(RKTN)
RWY 13R/L

RNAV DOVUR 1

AERONAUTICAL DATA TABULATION

Standard Instrument Departure Procedure Coding Tables

RNAV DOVUR 1 - MASTA Transition

Serial Number	Path Descriptor	Waypoint Identifier	Fly-over	Course/Track °M(°T)	Distance (NM)	Turn Direction	Altitude (ft)	Speed (kt)	Coordinates	VPA/ RDH	Navigation Specification	Remarks
001	CF	DOVUR	-	13L-134 (124.9) 13R-133 (124.2)	6.0 6.0	-	-	-	35°49'48.9"N 128°46'21.9"E	-	RNAV 1	-
002	TF	TN131	-	215 (206.3)	10.0	-	+6 000	-	35°40'50.1"N 128°40'55.5"E	-	RNAV 1	-
003	TF	MASTA	-	215 (206.3)	13.4	-	+6 000	-	35°28'47.0"N 128°33'39.6"E	-	RNAV 1	-

RNAV DOVUR 1 - KALOD Transition

Serial Number	Path Descriptor	Waypoint Identifier	Fly-over	Course/Track °M(°T)	Distance (NM)	Turn Direction	Altitude (ft)	Speed (kt)	Coordinates	VPA/ RDH	Navigation Specification	Remarks
001	CF	DOVUR	-	13L-134 (124.9) 13R-133 (124.2)	6.0 6.0	-	-	-	35°49'48.9"N 128°46'21.9"E	-	RNAV 1	-
002	TF	KALOD	-	189 (179.8)	19.6	-	-	-	35°30'12.1"N 128°46'26.5"E	-	RNAV 1	-

RNAV DOVUR 1 - LAPAL Transition

Serial Number	Path Descriptor	Waypoint Identifier	Fly-over	Course/Track °M(°T)	Distance (NM)	Turn Direction	Altitude (ft)	Speed (kt)	Coordinates	VPA/ RDH	Navigation Specification	Remarks
001	CF	DOVUR	-	13L-134 (124.9) 13R-133 (124.2)	6.0 6.0	-	-	-	35°49'48.9"N 128°46'21.9"E	-	RNAV 1	-
002	TF	LAPAL	-	082 (073.6)	15.7	-	-	-	35°54'12.6"N 129°04'52.0"E	-	RNAV 1	-

Change : Information of procedure and fix name(MAVIC → DOVUR).

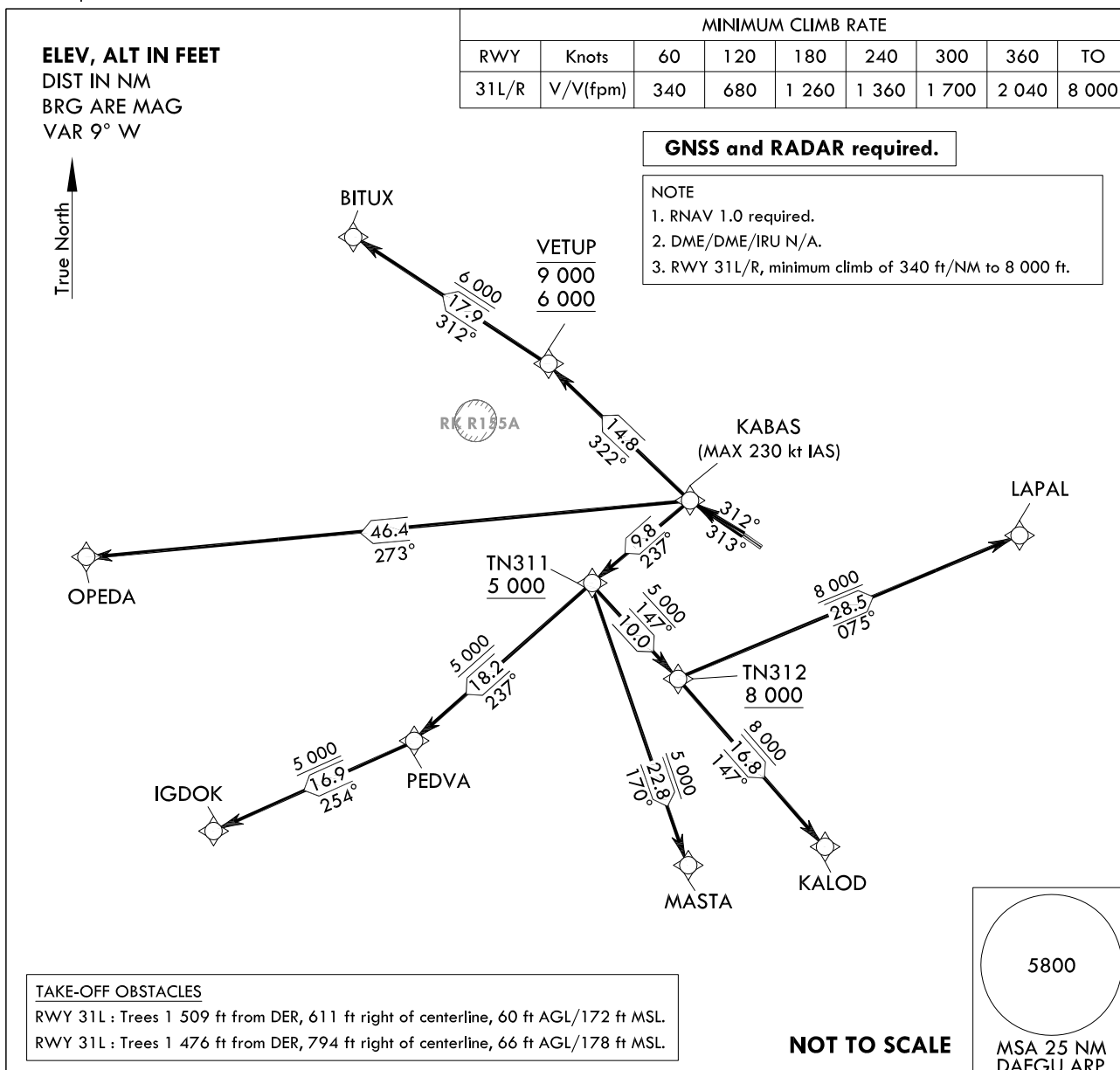
INTENTIONALLY

LEFT

BLANK

STANDARD DEPARTURE CHART
INSTRUMENT (SID)TRANSITION ALT 14 000
TRANSITION LVL FL 140DAEGU DEP 120.25 135.9
230.3
DAEGU TWR 126.2
236.6DAEGU/Daegu Intl(RKTN)
RWY 31L/R
RNAV KABAS 1

Note : Departure under U.S. TERPS.



DEPARTURE ROUTE DESCRIPTION

TAKE-OFF RWY 31R : Climb course 312° to KABAS, thence.....TAKE-OFF RWY 31L : Climb course 313° to KABAS, thence.....

..... Climb to 9 000 ft or assigned altitude via the following transition routes.

BITUX Transition : From KABAS on track 322° to cross VETUP between at or above 6 000 ft and at or below 9 000 ft, then on track 312° to BITUX.OPEDA Transition : From KABAS on track 273° to OPEDA.IGDOK Transition : From KABAS on track 237° to cross TN311 at or above 5 000 ft, then on track 237° to PEDVA and on track 254° to IGDOK.MASTA Transition : From KABAS on track 237° to cross TN311 at or above 5 000 ft, then on track 170° to MASTA.KALOD Transition : From KABAS on track 237° to cross TN311 at or above 5 000 ft, then on track 147° to cross TN312 at or above 8 000 ft, then on track 147° to KALOD.LAPAL Transition : From KABAS on track 237° to cross TN311 at or above 5 000 ft, then on track 147° to cross TN312 at or above 8 000 ft, then on track 075° to LAPAL.

Change : Information of procedure and fix names(CABON → KABAS, DALGU → VETUP, DURYU → PEDVA).

AERONAUTICAL DATA TABULATION

Standard Instrument Departure Procedure Coding Tables

RNAV KABAS 1 - BITUX Transition

Serial Number	Path Descriptor	Waypoint Identifier	Fly-over	Course/Track °M(°T)	Distance (NM)	Turn Direction	Altitude (ft)	Speed (kt)	Coordinates	VPA/ RDH	Navigation Specification	Remarks
001	CF	KABAS	-	31L-313 (304.2) 31R-312 (303.4)	5.0 5.0	-	-	-230	35°56'51.0"N 128°33'39.5"E	-	RNAV 1	-
002	TF	VETUP	-	322 (313.4)	14.8	-	-9 000 +6 000	-	36°07'02.7"N 128°20'21.4"E	-	RNAV 1	-
003	TF	BITUX	-	312 (302.9)	17.9	-	+6 000	-	36°16'44.9"N 128°01'47.9"E	-	RNAV 1	-

RNAV KABAS 1 - OPEDA Transition

Serial Number	Path Descriptor	Waypoint Identifier	Fly-over	Course/Track °M(°T)	Distance (NM)	Turn Direction	Altitude (ft)	Speed (kt)	Coordinates	VPA/ RDH	Navigation Specification	Remarks
001	CF	KABAS	-	31L-313 (304.2) 31R-312 (303.4)	5.0 5.0	-	-	-230	35°56'51.0"N 128°33'39.5"E	-	RNAV 1	-
002	TF	OPEDA	-	272.79 (264.05)	46.4	-	-	-	35°51'48.5"N 127°36'52.0"E	-	RNAV 1	-

RNAV KABAS 1 - IGDOK Transition

Serial Number	Path Descriptor	Waypoint Identifier	Fly-over	Course/Track °M(°T)	Distance (NM)	Turn Direction	Altitude (ft)	Speed (kt)	Coordinates	VPA/ RDH	Navigation Specification	Remarks
001	CF	KABAS	-	31L-313 (304.2) 31R-312 (303.4)	5.0 5.0	-	-	-230	35°56'51.0"N 128°33'39.5"E	-	RNAV 1	-
002	TF	TN311	-	237 (228.5)	9.8	-	+5 000	-	35°50'20.7"N 128°24'37.8"E	-	RNAV 1	-
003	TF	PEDVA	-	237 (228.4)	18.2	-	+5 000	-	35°38'13.0"N 128°07'54.2"E	-	RNAV 1	-
004	TF	IGDOK	-	254 (245.1)	16.9	-	+5 000	-	35°31'03.6"N 127°49'06.6"E	-	RNAV 1	-

Change : Information of procedure and fix names(CABON → KABAS, DALGU → VETUP, DURYU → PEDVA).

DAEGU/Daegu Intl(RKTN)

RWY 31L/R

RNAV KABAS 1

AERONAUTICAL DATA TABULATION

Standard Instrument Departure Procedure Coding Tables

RNAV KABAS 1 - MASTA Transition

Serial Number	Path Descriptor	Waypoint Identifier	Fly-over	Course/Track °M(°T)	Distance (NM)	Turn Direction	Altitude (ft)	Speed (kt)	Coordinates	VPA/ RDH	Navigation Specification	Remarks
001	CF	KABAS	-	31L-313 (304.2) 31R-312 (303.4)	5.0 5.0	-	-	-230	35°56'51.0"N 128°33'39.5"E	-	RNAV 1	-
002	TF	TN311	-	237 (228.5)	9.8	-	+5 000	-	35°50'20.7"N 128°24'37.8"E	-	RNAV 1	-
003	TF	MASTA	-	170 (161.1)	22.8	-	+5 000	-	35°28'47.0"N 128°33'39.6"E	-	RNAV 1	-

RNAV KABAS 1 - KALOD Transition

Serial Number	Path Descriptor	Waypoint Identifier	Fly-over	Course/Track °M(°T)	Distance (NM)	Turn Direction	Altitude (ft)	Speed (kt)	Coordinates	VPA/ RDH	Navigation Specification	Remarks
001	CF	KABAS	-	31L-313 (304.2) 31R-312 (303.4)	5.0 5.0	-	-	-230	35°56'51.0"N 128°33'39.5"E	-	RNAV 1	-
002	TF	TN311	-	237 (228.5)	9.8	-	+5 000	-	35°50'20.7"N 128°24'37.8"E	-	RNAV 1	-
003	TF	TN312	-	147 (138.4)	10.0	-	+8 000	-	35°42'50.9"N 128°32'46.7"E	-	RNAV 1	-
004	TF	KALOD	-	147 (138.5)	16.8	-	+8 000	-	35°30'12.1"N 128°46'26.5"E	-	RNAV 1	-

RNAV KABAS 1 - LAPAL Transition

Serial Number	Path Descriptor	Waypoint Identifier	Fly-over	Course/Track °M(°T)	Distance (NM)	Turn Direction	Altitude (ft)	Speed (kt)	Coordinates	VPA/ RDH	Navigation Specification	Remarks
001	CF	KABAS	-	31L-313 (304.2) 31R-312 (303.4)	5.0 5.0	-	-	-230	35°56'51.0"N 128°33'39.5"E	-	RNAV 1	-
002	TF	TN311	-	237 (228.5)	9.8	-	+5 000	-	35°50'20.7"N 128°24'37.8"E	-	RNAV 1	-
003	TF	TN312	-	147 (138.4)	10.0	-	+8 000	-	35°42'50.9"N 128°32'46.7"E	-	RNAV 1	-
004	TF	LAPAL	-	075 (066.4)	28.5	-	+8 000	-	35°54'12.6"N 129°04'52.0"E	-	RNAV 1	-

Change : Information of procedure and fix name(CABON → KABAS).

INTENTIONALLY

LEFT

BLANK